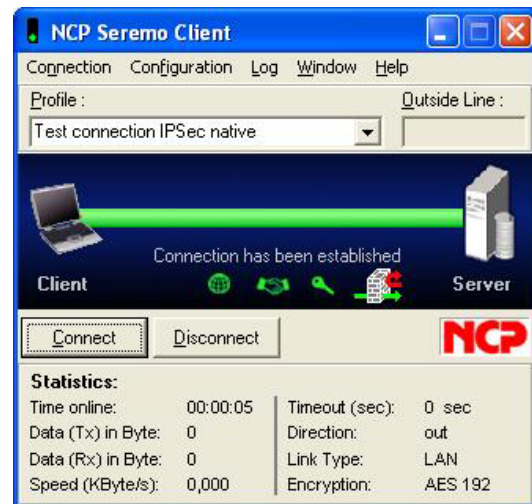


## Versatile IPsec client software for Windows operating systems

- ▶ **Highly secure, encrypted access from mobile and stationary devices to the central data network**
- ▶ **Worldwide dial-in via all public networks**
- ▶ **Compatible with VPN gateways from different manufacturers**
- ▶ **Support of all IPsec protocol extensions**



## Versatility

The NCP Seremo Client is a communication software that can be implemented in any Virtual Private Network and terminate against any IPsec gateway (e.g., concentrator, router, firewall)\*. The connection can be established over any wired or wireless networks, be it public or private. Data are transferred independent of the media type via stationary networks, public wireless networks, LANs (e.g. in the branch office network), the Internet, as well as wireless LANs (WiFi) on corporate campuses and at hotspots. Teleworkers can use any end device to access central data repositories and applications from any location.

## Security

Universal implementation possibilities require security mechanisms to repel attacks from the Internet and the Local Area Network. Sensitive data in transit need to be protected. The bricks for optimum security are:

- IPsec VPN tunneling,
- firewall functionalities (policies for ports and IP addresses),
- the latest encryption algorithms.

## Convenience

"Easy-to-use" - the NCP Seremo Client offers simple installation and simple operation. The integrated installation wizard and an intuitive graphic user-interface ensure convenient operation. The GUI also provides detailed log information. The integrated

Configuration Assistant helps to easily set parameters for each connection profile.

The user works from any location, just like he does on his/her office workstation. Domain logon is also every bit as convenient and familiar as it is in the local network. Prior to logging onto the domain controller the Client sets up a VPN tunnel to the central VPN gateway. Thus all the logon data are already encrypted for secure transmission.

The user doesn't "notice" the Client software at all during his remote access session. The Client software monitors and secures every data connection of the respective application, automatically in background.

### \*IPsec Compatibility

Compatible IPsec gateways (excerpt): Arkoon, Astaro, Bintec, Check Point, Cisco, D-Link, Fortinet, FreeSwan, Genua, Lancom, Linksys, NCP, Netgear, Netscreen, OpenBSD, Pyramid, Smoothwall, SonicWall, Symantec, WatchGuard.

For further information refer to:

[www.ncp.de/english/services/ipseckompat](http://www.ncp.de/english/services/ipseckompat)

### Other NCP Products

The NCP Secure Entry Clients are IPsec Clients with additional features compared to the Seremo. There are also Entry Clients for Linux and handheld devices.

The NCP Secure Enterprise Solution includes VPN Client and Server software as well as a complete security management platform. It is designed for large corporate installations.

**Seremo: Secure Remote Mobile**

## Technical Data

<b>System Requirements</b>	Windows XP, Windows 2000 (incl. SP4), Windows NT (incl. SP6.1,SRP), 128 MB DRAM, CPU min. 550 MHz, min. 15 MB free on HD; WAN and/or LAN adapter
<b>Security Features</b>	The Seremo Client supports all relevant IPsec standards as set in the RFCs.
<b>Firewall</b>	Differentiated filter rules for protocols, ports and addresses.
<b>Virtual Private Networking</b>	Native IPsec (Layer 3 tunneling), RFC conform; IPsec proposals can be determined by IPsec gateway (IKE, IPsec Phase 2); event log; block and central tunneling; MTU size fragmentation and reassembly; DPD; NAT traversal (NAT-T); IPsec Modes: Tunnel Mode, Transport Mode;
<b>Encryption</b>	Supported Symmetric Ciphers: AES 128,192,256 bits; Triple-DES 112,168 bits Seamless rekeying (PFS); Hash process: SHA1, MD5
<b>Authentication Methods</b>	IKE (aggressive and main mode), Quick Mode; XAUTH for extended user authentication; IKE config mode for dynamic allocation of a virtual address from the internal address range (private); PFS; Pre-shared secrets; One-Time Passwords & Challenge Response systems; RSA SecurID Ready; RADIUS, NT Domain (Windows NT).
<b>Networking Features</b>	LAN Emulation: virtual Ethernet adapter with NDIS interface
<b>Network Protocol</b>	IP
<b>Dialer</b>	Microsoft RAS Dialer
<b>IP Address Allocation</b>	DHCP (Dynamic Host Control Protocol), DNS: dial-in to the central gateway with changing public IP addresses through IP address query via a DNS server
<b>Communications Media</b>	Wired: PSTN, ISDN, xDSL, Cable, LAN; Wireless: WLAN, GSM (incl. HSCSD), GPRS, UMTS; HSDPA; Internet.
<b>Line Management</b>	DPD for connection monitoring; Shorthold mode; WLAN Roaming (handover); Channel bundling (dynamic in ISDN) with freely configurable threshold value, timeout (controlled by time and charges); budget manager;
<b>Compression</b>	IPCOMP (lzs), Deflate
<b>Point-to-Point Protocols</b>	PPP over ISDN, PPP over GSM, PPP over PSTN, PPP over Ethernet; LCP, IPCP, MLP, CCP, PAP, CHAP, ECP
<b>Client Monitor Graphical User Interface</b>	Multilingual (German, English, Polish); intuitive operation; configuration connection management and monitoring, connection statistics, log files, trace tool for error diagnosis; traffic light icon displays the connection states.

**Download and test the NCP Seremo Client for a 30-day trial period at [www.ncp.de](http://www.ncp.de)**

**More information on NCP Secure Communication products is available on the Internet at: [www.ncp.de](http://www.ncp.de)**